


# Final Cut Pro HD

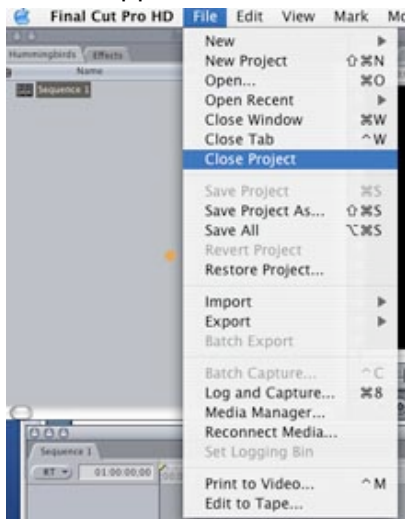
## Preference and System Settings (Ver 6)

Before launching Final Cut Pro (FCP):

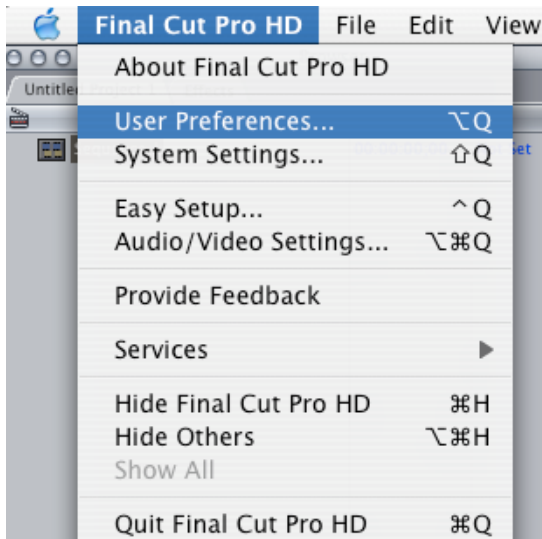
- Create or access your Final Cut Pro Project Folder
- Copy your Final Cut Project folder from your MPC Storage Account or Firewire Harddrive to the "Scratch Disk" of the computer you are working on.

Open Final Cut Pro by clicking on the application icon  **Final Cut Pro HD**. Final Cut will attempt to locate the folder and settings of the last FCP project opened on that computer. A dialogue box of this information offers the options to "quit" "continue" or "check again".

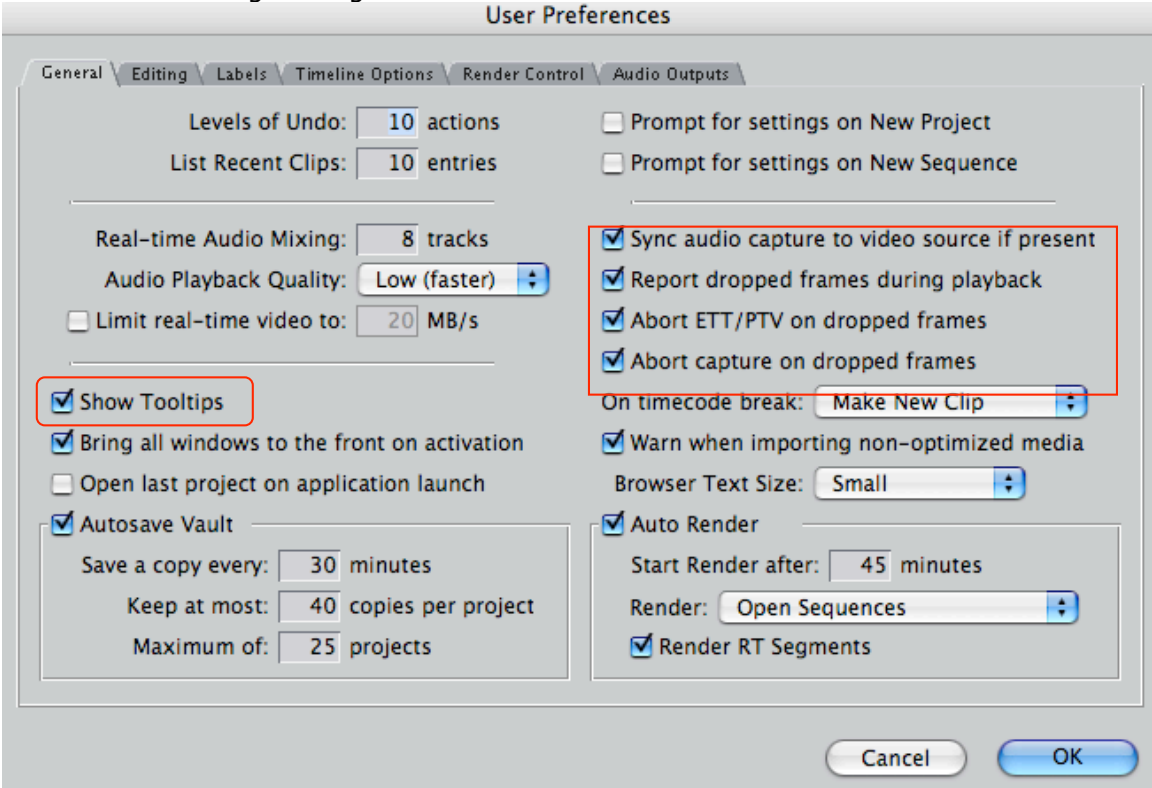
- Choose "continue".
- Close the current project using the **Close Project** command under the File menu. The **Timeline** window must be active for the Close Project command to appear.



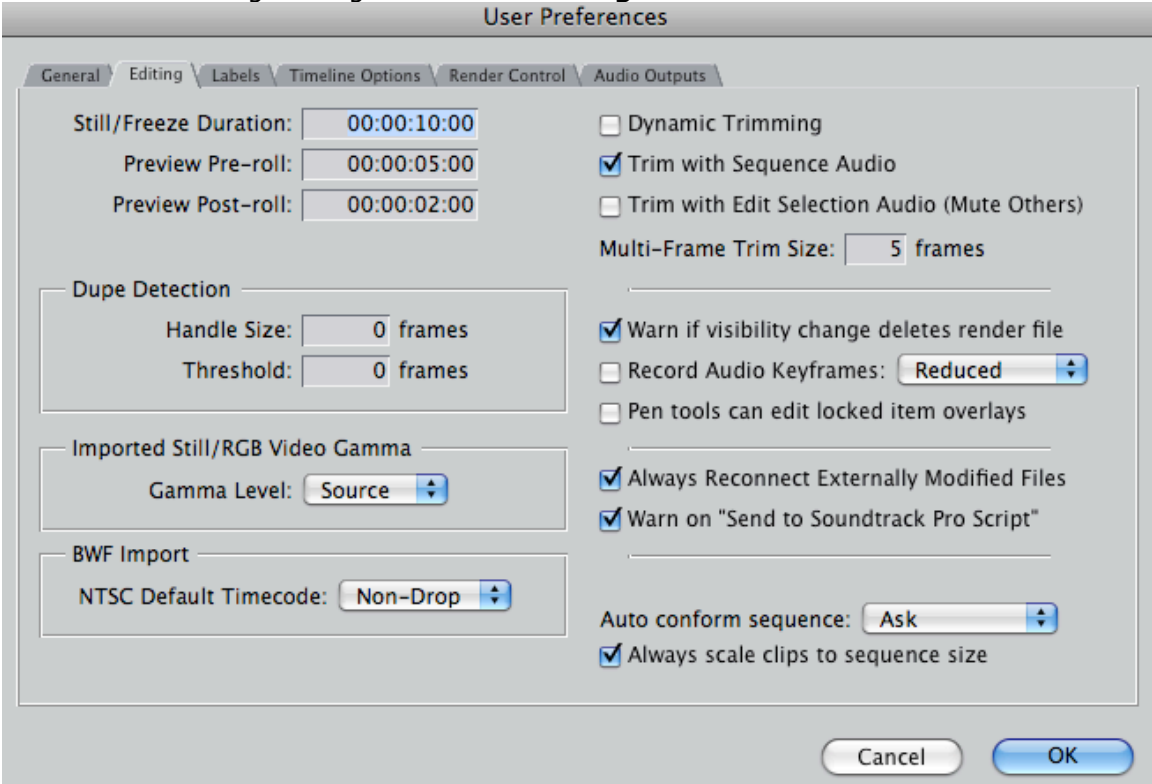
Under the **Final Cut Pro HD** menu, click on **User Preferences**. User Preferences is divided into six areas by navigation tabs along the top. Go through each tab and check that the settings match those given below.



Check the following settings under the **General Tab.**  
User Preferences

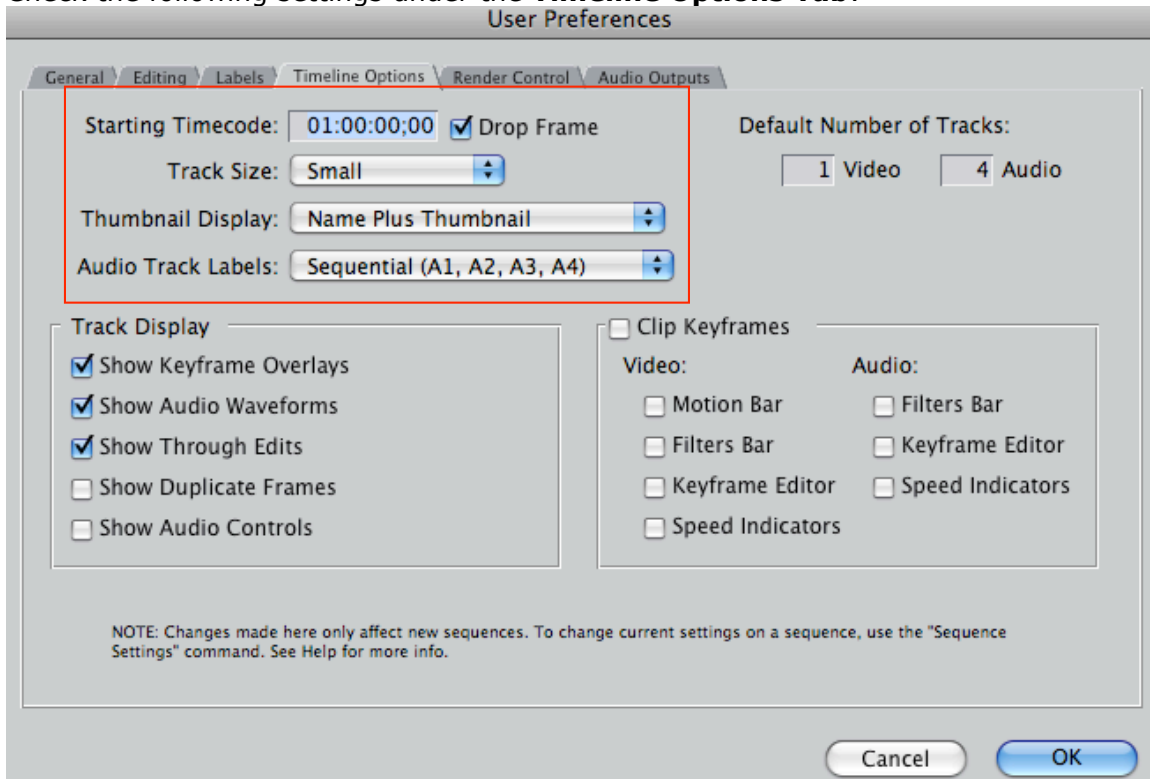


Check the following settings under the **Editing Tab.**  
User Preferences

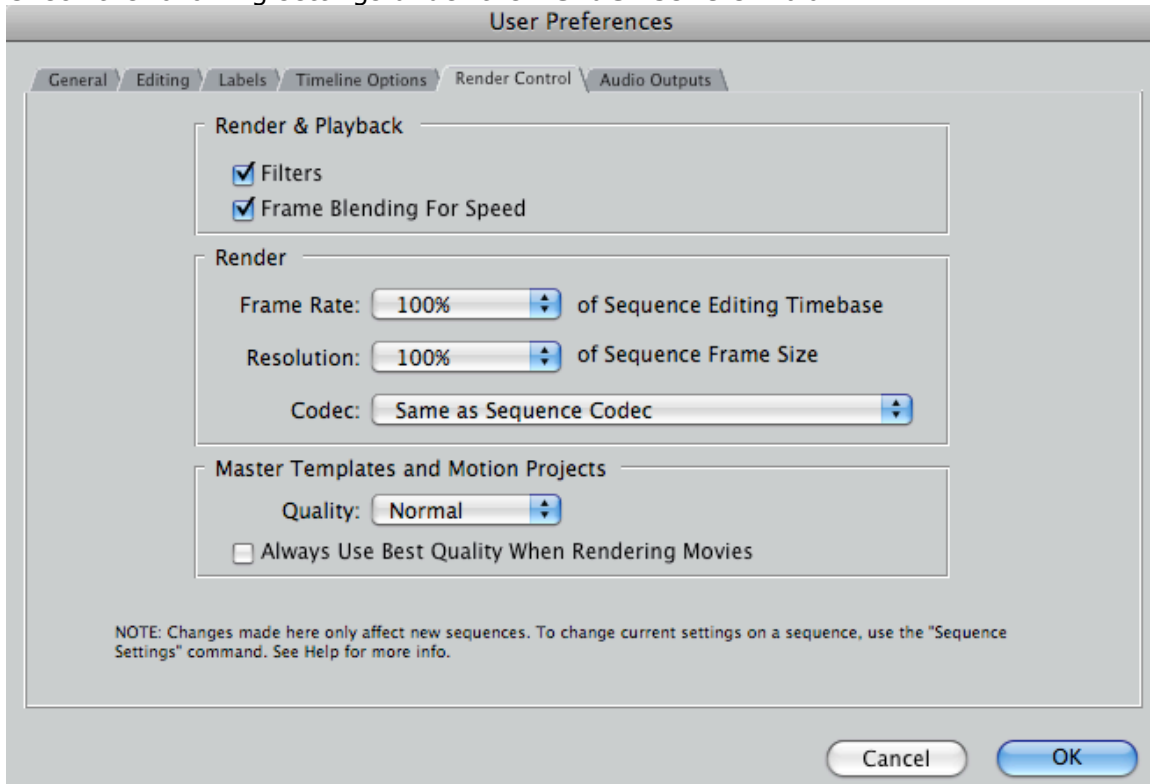


Ignore the **Labels Tab.**

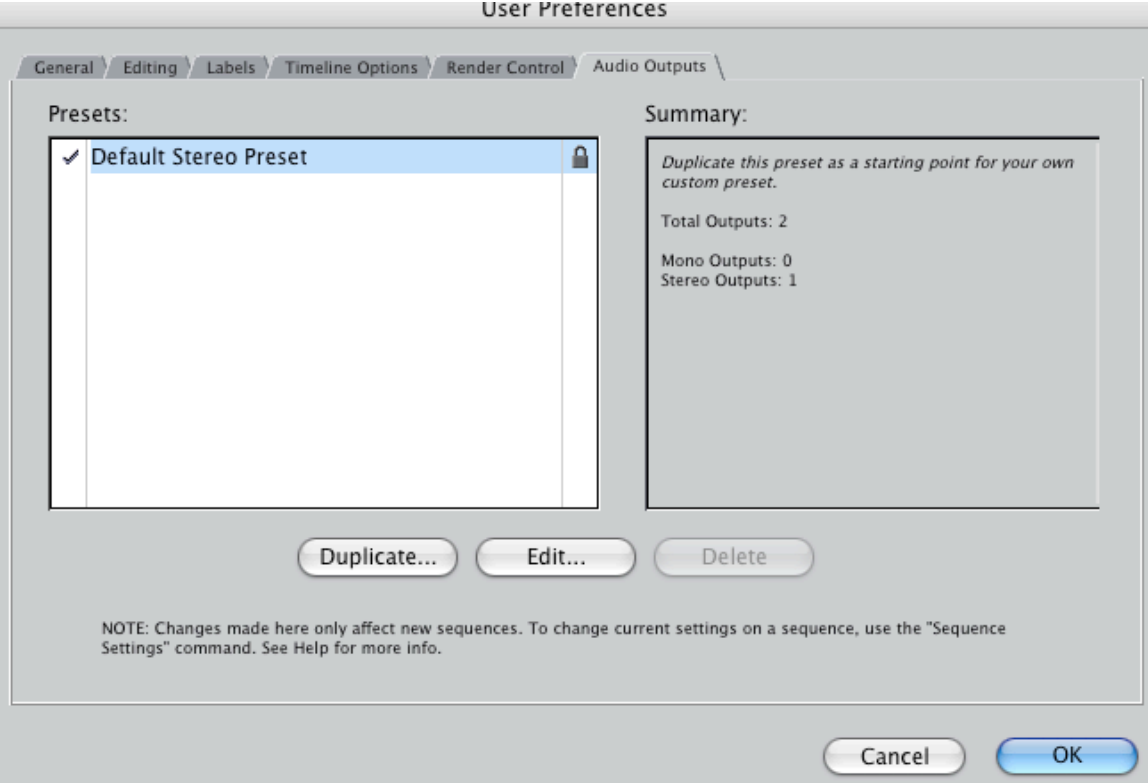
Check the following settings under the **Timeline Options Tab**:



Check the following settings under the **Render Control Tab**.

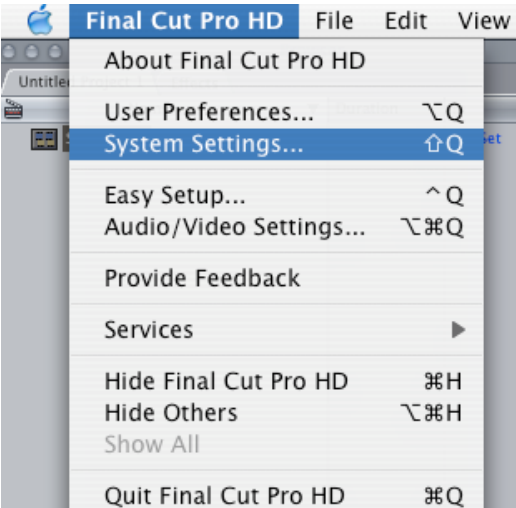


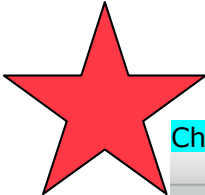
Check that the default settings show in the **Audio Output Tab**



You are finished setting up the User Preferences. Continue on to set up the System Settings. Remember to check both the User Preferences and System Settings each time you begin a session of Final Cut Pro.

Under the Final Cut Pro HD menu, click on **System Settings**. Again there is tab navigation through a series of menus.





Check the following settings in the **Scratch Disk Tab.**

System Settings

Scratch Disks Memory & Cache Playback Control External Editors Effect Handling

Video Audio Video Audio  
Capture Capture Render Render

<input checked="" type="checkbox"/>	<input checked="" type="checkbox"/>	<input checked="" type="checkbox"/>	<input checked="" type="checkbox"/>	Clear	Set...	164.4 GB on Scratch FWHD:Hummingbird
<input type="checkbox"/>	<input type="checkbox"/>	<input type="checkbox"/>	<input type="checkbox"/>	Clear	Set...	<None Set>
<input type="checkbox"/>	<input type="checkbox"/>	<input type="checkbox"/>	<input type="checkbox"/>	Clear	Set...	<None Set>
<input type="checkbox"/>	<input type="checkbox"/>	<input type="checkbox"/>	<input type="checkbox"/>	Clear	Set...	<None Set>

Capture Audio and Video to Separate Files

Waveform Cache: Set... 164.4 GB on Scratch FWHD:Hummingbird

Thumbnail Cache: Set... 164.4 GB on Scratch FWHD:Hummingbird

Autosave Vault: Set... 164.4 GB on Scratch FWHD:Hummingbird

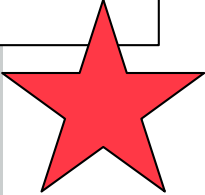
Minimum Allowable Free Space On Scratch Disks:  MB

Limit Capture/Export File Segment Size To:  MB

Limit Capture Now To:  Minutes

Cancel OK

Set to your Final Cut Project Folder ("Name") in the Scratch Disk of the computer.



The remaining System Settings Tabs should be as follows:

System Settings

Scratch Disks Memory & Cache Playback Control External Editors Effect Handling

Memory Usage

Application  % (353MB)

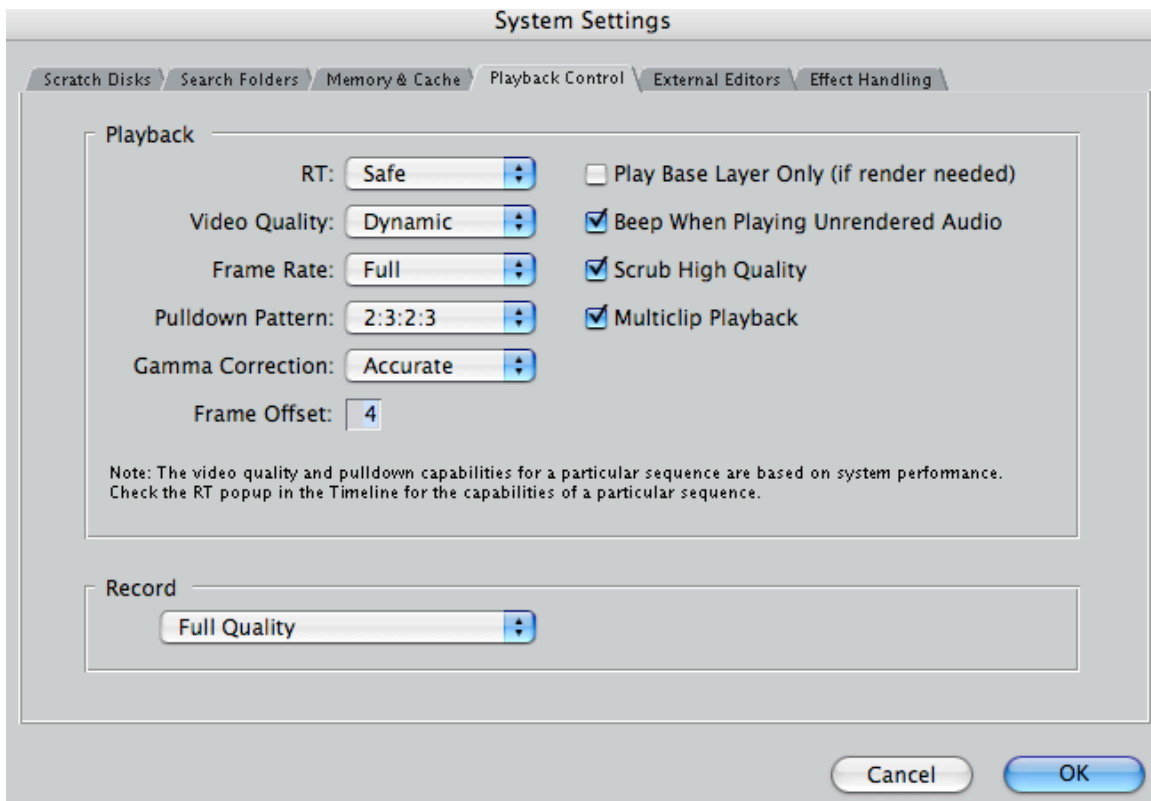
Still Cache  % (20MB)

Thumbnail Cache

Disk:  K

RAM:  K

Cancel OK



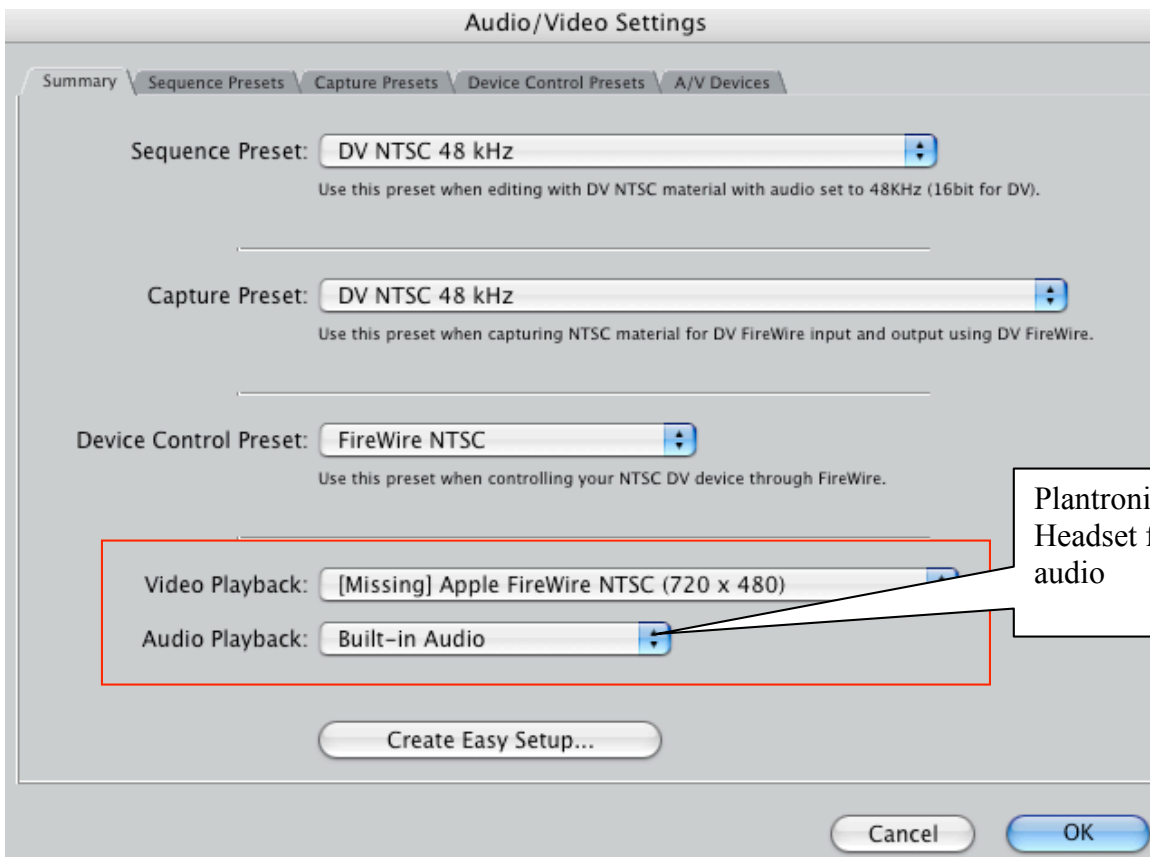
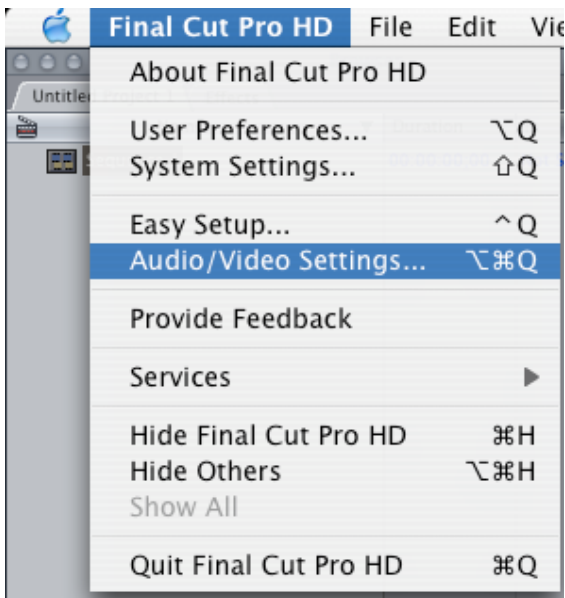
If you wish to edit images or audio in an application other than Final Cut, you can set another application as an **External Editor**. Photoshop or Motion could be set to open when editing still images or Sound Studio for editing audio when you control click a clip in the browser or canvas and then choose "Open in Editor" from the shortcut menu.

Final Cut will then launch the application defined in this preference area for that type of clip.



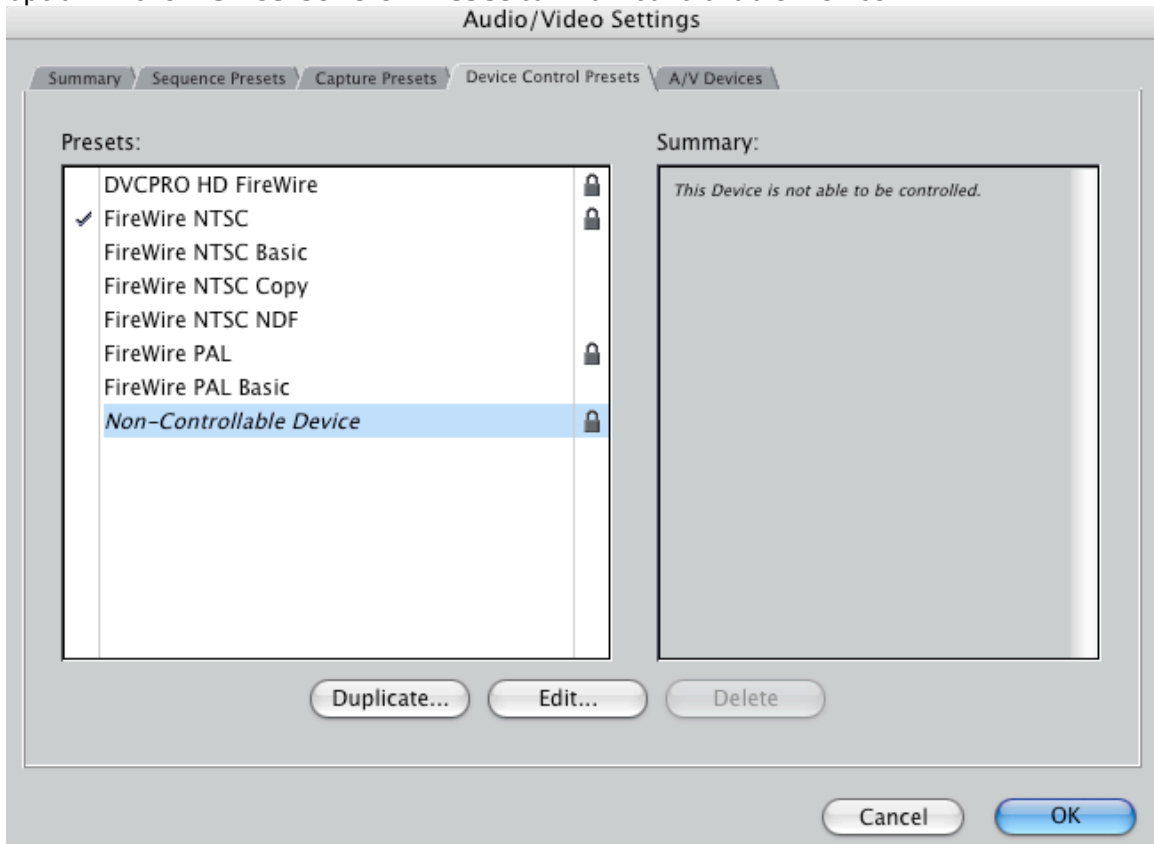
In the final tab, **Effects Handling** settings, all effects should be handled by Final Cut Pro

Select **Audio/Video Settings** from the **Final Cut Pro** menu.



Once you choose the "presets" listed above, all of the presets listed on the other tabs are automatically set up. You will not need to check them unless working with VHS.

If you are capturing VHS from the VCR/DVD combo deck, you will need to change an option in the **Device Control Preset** to "Non-controllable Device".



Congratulations! You can now open your existing project on the Scratch disk (remember you moved it from the MPC Storage Account or Firewire Harddrive to the local computer when we started) by clicking **Open** from the **File** menu and navigating to the scratch disk and your folder. Or, you can create a **New Project** from the **File** menu in FCP.

