

Bass Trombone

An Augural Fanfare

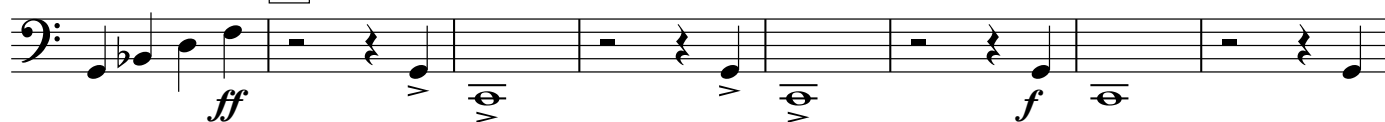
Samuel Pellman

♩ = 100



8 poco rit.

A



16

B



21



26



31

C



36



41

D



46



mf

Copyright © 1989 Samuel Pellman

V.S.

51

51

57

rit.

E

$\text{♩} = 92$, more broadly

f

mf

Staff 51-56: Bass clef, key signature of one flat. Measures 51-54 contain eighth and quarter notes. Measure 55 is a whole note E4, marked with a box 'E'. Measure 56 is a half note G3, marked **f**. Measure 57 is a half note F3, marked **mf**. Measures 58-60 contain eighth and quarter notes.

65

65

ff

Staff 65-68: Bass clef. Measures 65-68 contain eighth and quarter notes. Measure 65 is marked **ff**. Measures 66-68 have slurs and accents.

69

69

fff

fp

fff

Staff 69-72: Bass clef. Measures 69-71 contain whole notes, marked **fff**. Measure 72 is a half note, marked **fp**. Measure 73 is a half note, marked **fff**. Measure 74 is a whole rest.